

Duplexvent FLEXI DV1100

Flexi Line Side Entry -
Up to 1250 m³/h air volume



KEY FEATURES

- Air volume up to 1000 m³/hr @ 200 Pa
- Excellent heat recovery efficiency, up to 92%
- Versatile unit positioning with floor and ceiling suspended mounting options
- Low SFP with energy saving EC fans
- Low noise, refer to NR35 and BB93 standards
- 100% adjustable digital controller with internet and BMS connection
- BREEAM, Passive House and ErP 2016 / 2018 compliant
- 2 year warranty +

PERFORMANCE

Sound Power Level L _w (dB)	dB (A)		63	125	250	500	1 k	2 k	4 k	8 k
Outdoor air e1	47	68	57	47	42	35	28	<25	<25	<25
Supply air e2	66	80	74	69	62	60	55	49	47	
Extract air i1	45	67	55	46	40	33	26	<25	<25	
Exhaust air i2	65	80	7	68	60	58	53	47	44	
Breakout noise	51	70	55	57	44	40	33	27	25	
Sound Pressure Level L _d	dB (A)		63	125	250	500	1 k	2 k	4 k	8 k
To the surrounding	21	49	35	37	<25	<25	<25	<25	<25	<25

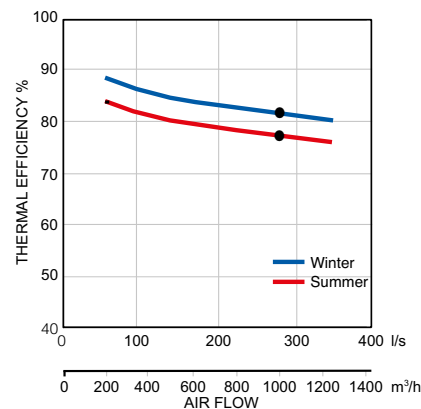
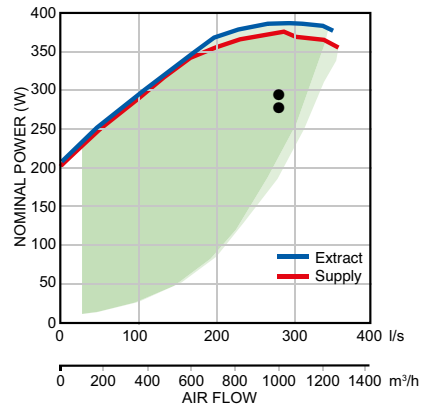
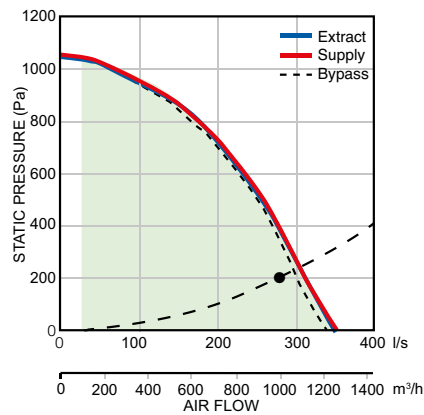
Sound pressure level is measured at 3m distance

Ventilation		Supply Air	Extract Air
Maximum air volume @ 200 Pa	m ³ /h / l/s	1000 / 277.77	1000 / 277.77
Air volume @ 150 Pa*	m ³ /h / l/s	500 / 139	500 / 139
Nominal voltage	V	230	230
Voltage (at operation point)*	V	230	230
Nominal Power (at operation point)*	W	93	87
Max connection power	W	385	385
Max current	A	2.5	2.5
Filters		F7	M5
Fan Type		EC	EC

* Note: ● The figures above have been measured at 500 m³/h and 150 Pa. Please use the Duplexvent Selection Software to calculate measurements at other performance levels.

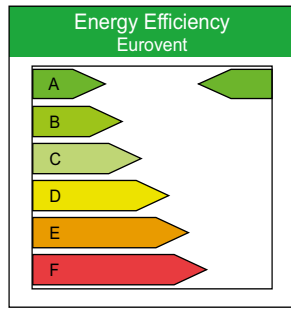
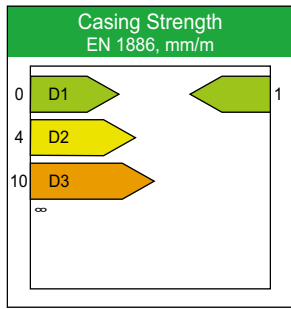
Heat Recovery		Supply Air	Extract Air
Maximum air volume @ 200 Pa	m ³ /h / l/s	1000 / 277.77	1000 / 277.77
Air volume @ 150 Pa*	m ³ /h / l/s	500 / 139	500 / 139
Temperature at inlet*	°C	-10	22
Temperature at outlet*	°C	17	2
Humidity at inlet*	%rh	90	40
Humidity at outlet*	%rh	12	100
Thermal efficiency in winter / summer	%	84 / 80	
Performance in winter / summer	kW	4.6 / -0.6	
Condensation	l/h	1.5	
Type of heat exchanger		Counter Flow, Plastic	
Part No.		90000183	

* Note: ● The figures above have been measured at 500 m³/h and 150 Pa. Please use the Duplexvent Selection Software to calculate measurements at other performance levels.



+excludes motors. Motor warranty one year from date of purchase.



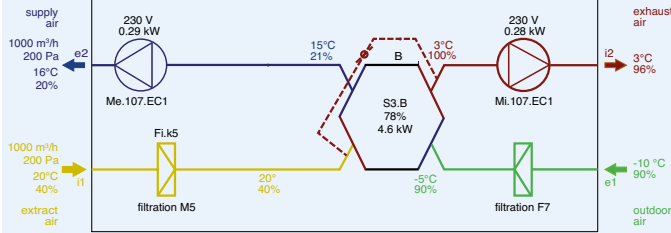


2016 / 2018

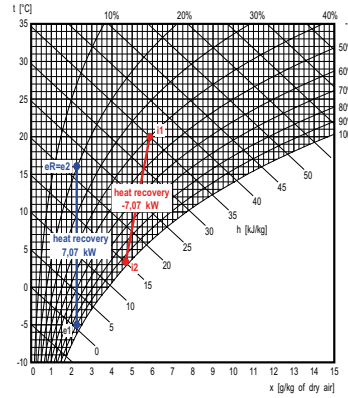


Winter Operation*:

e1 - outdoor air (ODA) i1 - extract air (ETA)
e2 - supply air (SUP) i2 - exhaust air (EHA)



Note: AHU functions diagram. Inlet and outlet location may differ from actual position and port configuration.



Supply

Description	t [°C]	rh [%]
e1 Outdoor Air	-10.0	90
e2 Supply Air	17.0	12

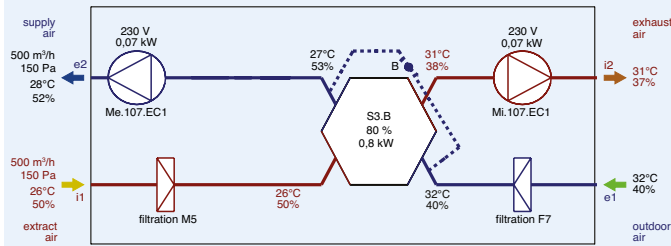
Exhaust

Description	t [°C]	rh [%]
i1 Extract Air	22.0	40
i2 Exhaust Air	2.0	100

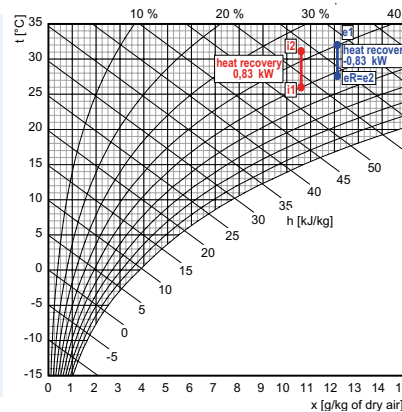


Summer Operation*:

e1 - outdoor air (ODA) i1 - extract air (ETA)
e2 - supply air (SUP) i2 - exhaust air (EHA)



Note: AHU functions diagram. Inlet and outlet location may differ from actual position and port configuration.



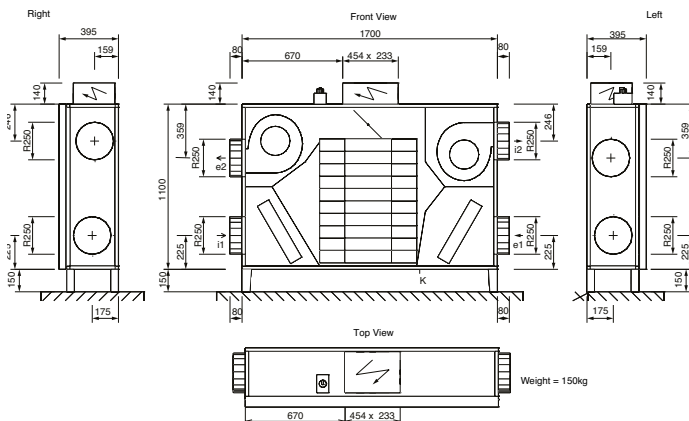
Supply

Description	t [°C]	rh [%]
e1 Outdoor Air	22.0	35
e2 Supply Air	25.0	29

Exhaust

Description	t [°C]	rh [%]
i1 Extract Air	26.0	50
i2 Exhaust Air	23.0	61

DIMENSIONS



Connections	Type	Diameter	Accessories
e1	Outdoor Air	Ø 250 mm	Shut-off Damper, Flexible Connector
e2	Supply Air	Ø 250 mm	Flexible Connector
i1	Extract Air	Ø 250 mm	Flexible Connector
i2	Exhaust Air	Ø 250 mm	Flexible Connector
K	Condensate Outlet	Ø 21 mm	Condensate Trap

ACCESSORIES

See Duplexvent accessories pages for more details.

* The above figures are example performance measurements. Please use the Duplexvent Selection Software to calculate measurements at other performance levels.

Call: 01494 525252

Visit: airflow.com



Airflow Developments Limited
Aidelle House, Lancaster Road,
Cressex Business Park,
High Wycombe, Buckinghamshire,
United Kingdom, HP12 3QP

E-mail: info@airflow.com
Telephone: +44 (0) 1494 525252

airflow.com

© Airflow Developments Limited. Airflow Developments Limited reserve the right, in the interests of continuous development, to alter specifications without prior notice. All orders are accepted subject to our conditions of sale which are available on request



80000670 - Issue 2 12/22